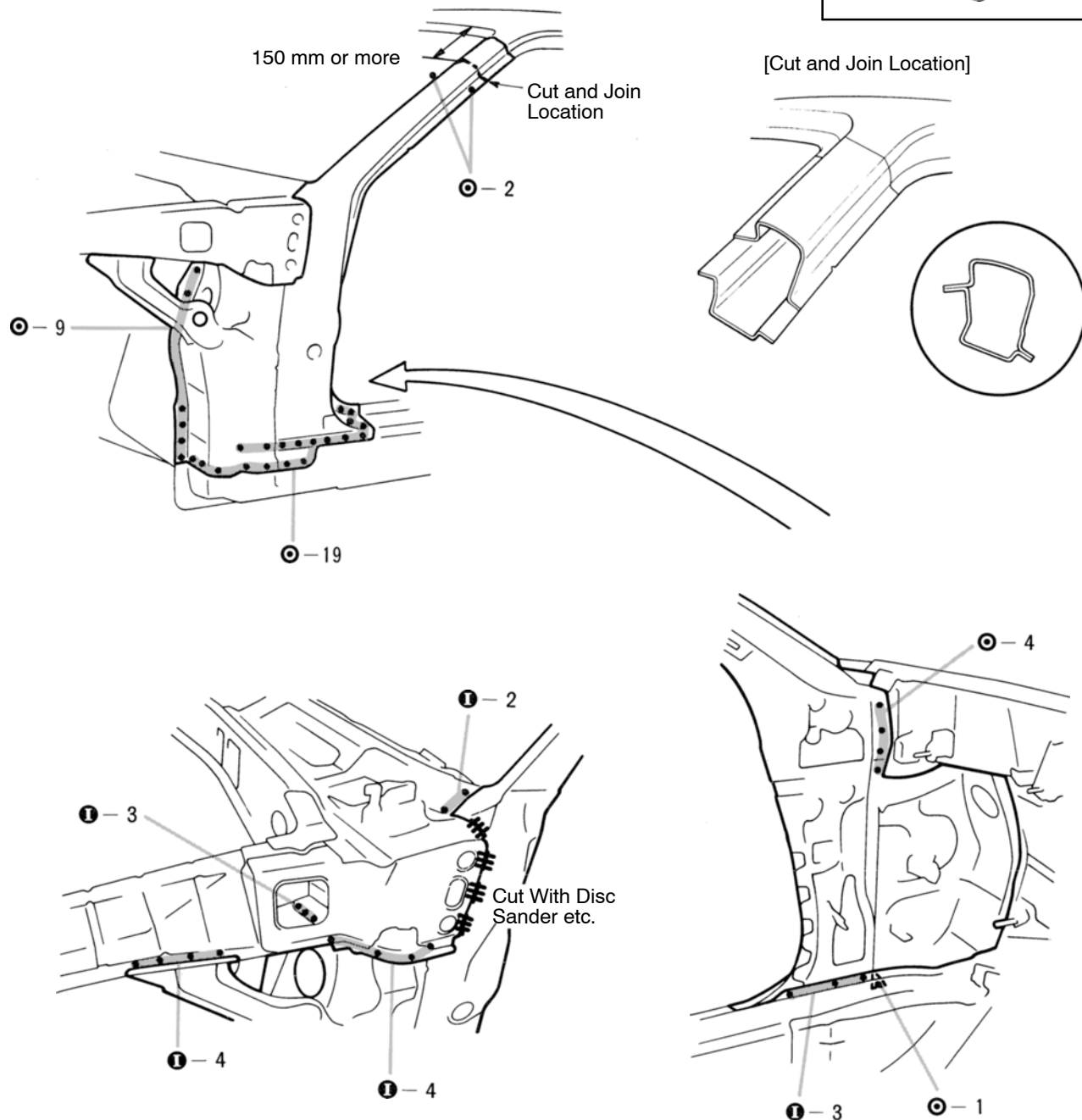
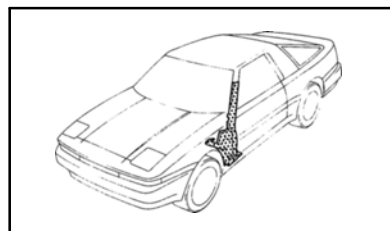


## FRONT BODY PILLAR (CUT)

### REMOVAL



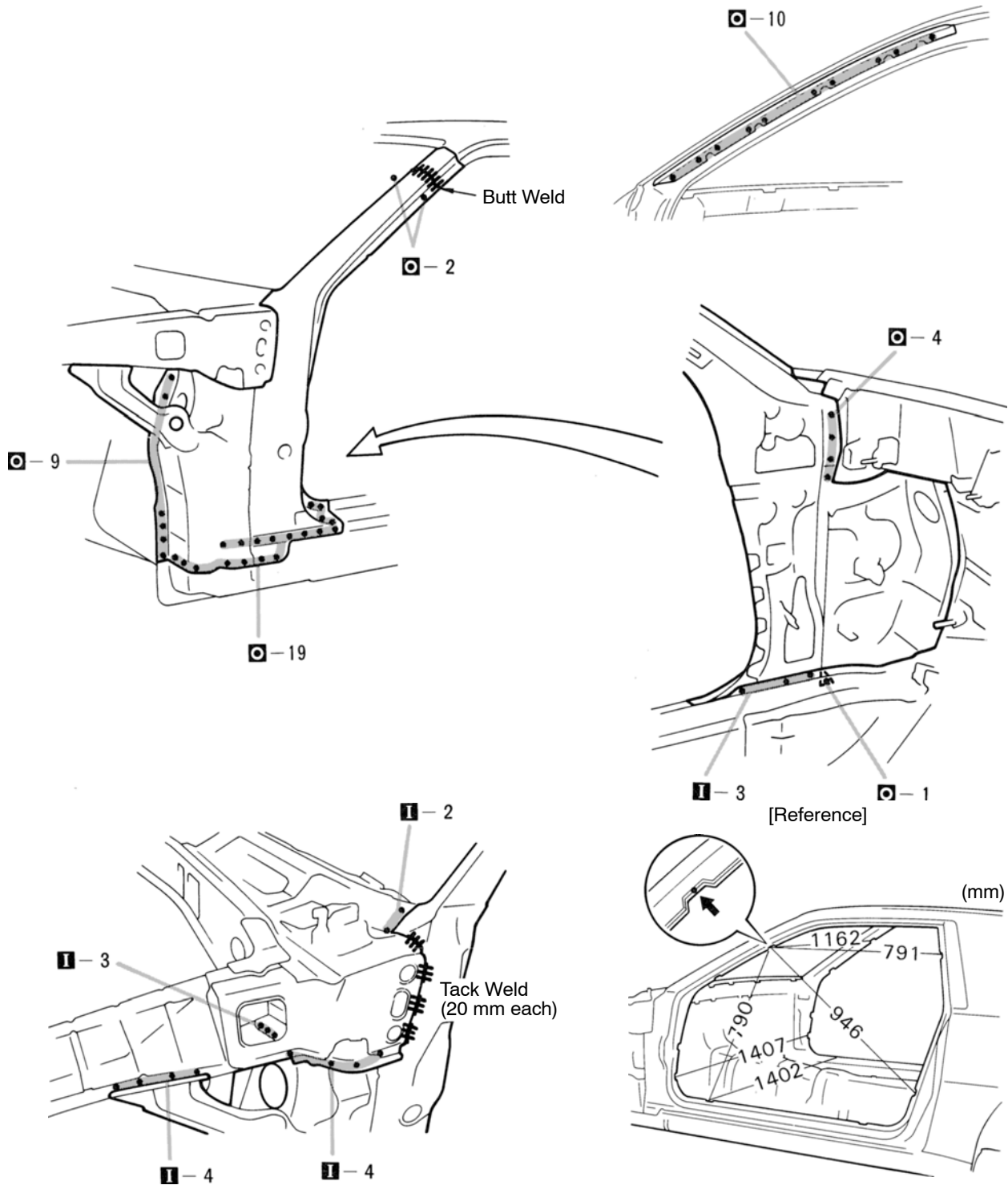
1. Cut and join the front body pillar at the location shown above.

mm	in.
150	5.91

#### NOTE:

- 1) As shown above, cut and join the front body pillar outer and inner panels at a position shifted about 50 mm (1.97 in.).
2. Remove the remaining roof drip channel from body side.

## INSTALLATION



1. Temporarily install the new part and check the fit of the front door, front fender, hood and windshield glass.

mm	in.
20	0.79
790	31.10
791	31.14
946	37.24
1,162	45.75
1,402	55.20
1,407	55.39